



**Dear Customer,**

Quality has always been our driving force and founding Argon Audio is a natural extension of this philosophy.

We have 20 years' experience in creating and specifying high quality products, manufacturing them and selling them on to end users with **Value-for-Money** as the primary aim. And Argon Audio is a brand fully compliant with these values. Design, features and quality standards are all specified in Denmark and manufacturing takes place in the Far East, where quality vendors are highly competitive - and as a result supply outstanding **Value-for-Money** products. – To the delight of both ourselves and our customers!

**Congratulations with your Stream1, may it bring years of enjoyment.**

**Table of content**

<b>1</b>	<b>Introduction</b>	<b>3</b>
<b>2</b>	<b>Controls and connectors</b>	<b>5</b>
<b>3</b>	<b>Getting started/setup</b>	<b>7</b>
<b>4</b>	<b>Internet radio portal registration</b>	<b>8</b>
<b>5</b>	<b>Setting up a music server</b>	<b>10</b>
<b>6</b>	<b>Setting up Stream1 for “Play To” Windows 7 streaming media feature.</b>	<b>12</b>
<b>7</b>	<b>UNDOK app</b>	<b>17</b>
<b>8</b>	<b>Troubleshooting and error messages</b>	<b>21</b>
	<b>Glossary</b>	<b>23</b>

## 1. Introduction

### Safety Instructions

*Please store this instruction manual for future reference.*

- Do not use this product near water or moisture.  
Clean only with a dry cloth.  
Unplug this product from the wall outlet before cleaning.
- Place the unit on a solid surface.
- Do not put it in a closed bookcase or a cabinet that may keep air from flowing through its ventilation openings.
- Do not install near any heat sources, such as radiators, heat registers, stoves or other appliances that produce heat.
- Protect the power cord from being walked on or pinched, particularly at plugs and the point where they exit from the product.
- Servicing is required when the product has been damaged. Do not attempt to service this product yourself. Opening or removing covers may expose you to dangerous voltages or other hazards. Please contact the manufacturer to be referred to an authorized service center near you.
- To prevent risk of fire or electric shock, avoid over loading wall outlets, extension cords, or integral convenience receptacles.
- Do not let objects or liquids enter the product.
- Use proper power sources. Plug the product into a proper power source, as described in the operating instructions or as marked on the product.



## Features;

This manual describes how to use the Argon Stream1, an advanced but easy-to-use LAN/Wi-Fi connected audio system with the following modes:

- **Internet Radio** with access to over 20,000 stations, 'Listen again' broadcasts and podcasts
- **Music player** allowing easy navigation and playback through a network-stored library of music files including AAC+, MP3, WMA, WAV, FLAC 16 bit.
- **Mediaplayer**, "Play To" feature allowing media to be pushed from a PC running Windows 7 to Stream1 operating in Digital Media Renderer (DMR) mode.
- **Spotify Connect** play back and control. Via Spotify app.

## Stream1 also provides the following features:

- **UNDOK Wi-Fi Remote control** from an Apple iPhone, iPad iPod touch and Android, using the UNDOK Wireless Device Remote Control application
- **UPnP Music player modes**
- **Multiple network profiles** for easy setup and portability
- **Multiple operating languages**

## Carton contents;

We have during production and packing carefully checked and inspected the unit. After unpacking please check for any damage from transport.

We recommend that you keep the original carton box and packing material for any future shipping.

## In the carton box you will find:

- ARGON Stream1
- DC5V power adapter
- Quick start guide
- RCA connection cable

## External resources

To operate Stream1, the following external resources are needed:

- A power source (100-240 V mains supply)
- A wireless network (provided through a router) with appropriate permissions and password if necessary (for *Internet radio* and *Network Music player* modes)
- Broadband Internet access (for *Internet radio mode* and Internet Software Update)
- A music library stored on the network (if you want to use this functionality)
- An Apple iPhone, iPad, iPod touch or Android device (for using the UNDOK Wireless Device Remote Control application)

## 2. Controls and connectors

### Main controls

The Stream1 is fully and only controlled from UNDOK app.  
(There are no operating controls on Stream1 itself).  
Operation can also be done from the Spotify app.

For basic first time set-up the UNDOK app has to be used.

[http://www.frontier-silicon.com/undok#.Vea8qPmqo\\_8](http://www.frontier-silicon.com/undok#.Vea8qPmqo_8)

## Connectors (backside)

As shown below Stream1 has connectors/buttons (from left to right) for the following:

- Ethernet/LAN cable to Router connection
- RCA analogue stereo output
- Spdif/optical output
- DC power in (5 V)




### 3. Getting started/setup

1. Make sure your Wi-Fi Router is On, and/or connect the Adapter to the LAN plug on your Router and then to the Adapter
  2. Download the free control App. named UNDOK from either Google Playstore or iTunes stores on to your mobile device.
  3. A separate guide for UNDOK app. can be found here: <http://www.argonaudio.com/undok-guide/>
  4. Plug the Power supply into an electric outlet and into the back of the Adapter.
  5. Press the standby button and wait for the Adapter to start flashing slowly blue.
  6. Open the UNDOK App on your mobile device and choose "speaker setup" or "set up audio system".
  7. Follow the steps in the screen Menu on your mobile device
- All operations are done from your mobile device.

#### **Your Argon Stream1 has Spotify Connect built in.**

Spotify Connect lets you control the music playing on Argon Stream1, using the Spotify app on your mobile; tablet or PC. You need Spotify Premium to use Connect

#### **How to use Spotify Connect**

1. Add your Argon Stream1 to the same wifi network as your phone, tablet or PC (see product user instructions for details).
2. Open the Spotify app on your phone, tablet or PC, and play any song.
3. If you're using the app on a phone or tablet - tap the song image in the bottom left of the screen. For PC and tablets skip this step.
4. Tap the Connect icon 

For information on how to set up and! use Spotify Connect please visit [www.spotify.com/connect](http://www.spotify.com/connect)

## 4. Internet radio portal registration

Argon Stream1 uses the Frontier Silicon Internet radio portal website that allows you to organise your favourite's lists and also listen to Internet radio on a computer.

FRONTIER SILICON  
Radio Portal

Search

Stations  Podcasts

Browse Stations  
By location  
By genre  
By language  
New stations  
Most popular

Browse Podcasts  
By location  
By genre

My account  
My favourites  
My added stations  
My preferences

English Danish Portuguese  
Español Norsk Italian  
Français Svensk Nederlands  
Deutsch Suomi

About us Contact us Logout

© Frontier Silicon 2008 | Legal

Access global stations  
Personalise favourites

Search. Browse. Find.

Playing  
Radio Mavis  
128 K  
Segavibes faya av

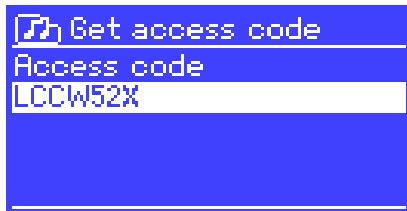
Mark's radio

Station name	Location	Genre	Stream
2 Ten FM	Reading United Kingdom	Electronica	WMA 128K
BBC Radio 2	London United Kingdom	Variety	RealPlayer 44K
Capital Radio	London United Kingdom	Top 40	WMA 128K
Virgin Radio	London United Kingdom	Pop	MP3 128K
On Air Power	Internet Only	World Asia	MP3 128K
Antenna Uno	Catania Italy	Dance	MP3 96K
BBC Radio 1	London United Kingdom	Top 40/Dance/Rock	RealPlayer 16K
Radio Dzar	Internet Only	World Middle East	MP3 128K
108 Xtra	United Kingdom	Electronica	MP3 256K
Capital FM 96.4	Nairobi Kenya	Pop	WMA 20K
BBC RSLiveSportX International	London United Kingdom	Sports	WMA 48K
Classic FM	London United Kingdom	Classical	WMA 128K



To register your Stream1 with the portal, switch to Internet radio mode as described in Section 4, and then obtain your adapter's unique portal access code by selecting **Menu** > **Station list** > **Help** > **Get access code** >.

Write down the access code.



*Note:* Do not confuse the portal access code with the Adapter ID (from **Menu** > **System settings** > **Info**.)

Visit the portal website at [www.wifiradio-frontier.com](http://www.wifiradio-frontier.com).

If this is your first visit to the portal, register for a new account, entering the following information:

- access code,
- your e-mail address,
- password,
- Adapter model (Argon Stream1).

If you already have an account and wish to add an additional adapter/radio, log in to your account and select **My preferences** > **Add another Wi-Fi radio**.

Once your Adapter is registered with the portal, you can immediately use the Internet radio favourites and added stations features.

## Setting up a music server

In order for Stream1 to play music files from a computer, the computer must be set up to share files or media.

**UPnP media sharing** allows devices like Stream1 to play music from a shared media library, navigating through tag menus such as *Artist*, *Album* or *Genre*. If you are running a suitable server system such as a PC with Windows Media Player 10 or later (WMP), and your music library is well-tagged, then it is recommended to use media sharing. Only the UPnP server needs to be set up.

*Notice: iTunes does not currently work as a UPnP media server, but there are add-ons available to work with an iTunes library.*

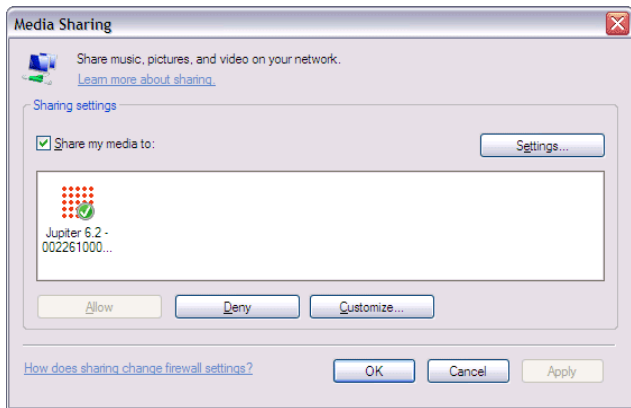
## Sharing media with Windows Media Player

The most common UPnP server is Windows Media Player (10 or later). Alternatively, other UPnP platforms and servers may be used. To set up WMP for media sharing, perform the following steps:

1. Ensure that the PC is connected to the network.
2. Ensure that the Adapter is powered on and connected to the same network.
3. In WMP, add to the media library the audio files and folders you want to share with Stream1 (**Library > Add to Library...**).
4. In WMP, enable media sharing (**Library > Media sharing...**).

*Notice: setup can differ depending on which version of WMP you have*

Notice; it may show; Argon Stream1, "Unknown device", "Frontier Silicon" or the Jupiter logo as shown below.



Make sure that the Adapter has access to the shared media by selecting it and clicking **Allow**. You can also set a name for the shared media in **Settings...** Click **OK** to close the dialogue boxes.

The PC is now ready to stream the music to the Adapter. The WMP UPnP service runs in the background; there is no need to start WMP explicitly.

## 6. Setting up for “Play To” Windows 7 streaming media feature

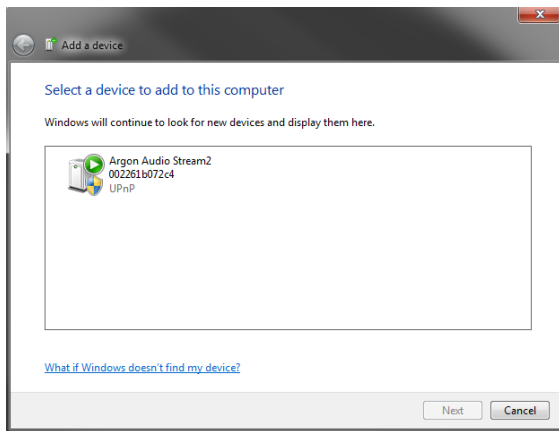
To set-up Argon Stream1 to be controlled and to stream music via Windows Media Player 12 (Windows 7 only), perform the following steps:

1. Ensure that the PC is connected to the network.
2. Ensure that Stream1 is powered on and connected to the same network.

*Note:* Stream1 must be in an Internet radio mode to be detected.

3. From the Windows 7 main screen, select **Start > Devices and Printers**.
4. Select the **Add a device** tab in the top left of the Devices and Printers window and follow the instruction prompts given by the wizard.





In the Devices and Printers window a icon \*) will appear and you are now ready to stream your Windows media music files to Stream1.

*\*) To change the name of your device, right click on icon and choose properties. Then choose UPnP and click on "device webpage"*

## Using the “Play To” feature in Windows 7 to stream media

One of the new Windows 7 features includes a feature called “Play To” and this lets your PC running Windows 7 control Stream1 to push media and use as a universal remote control for your media collection.

Stream1 supports the industry standard DLNA (Digital Living Network Alliance) 1.5 digital media renderer. This allows you to “Play To” other devices around your home and combine media streaming with controlling a connected media receiver while streaming content to it from another Windows 7 PC on a home network.

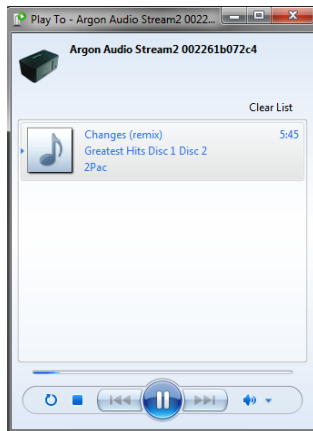
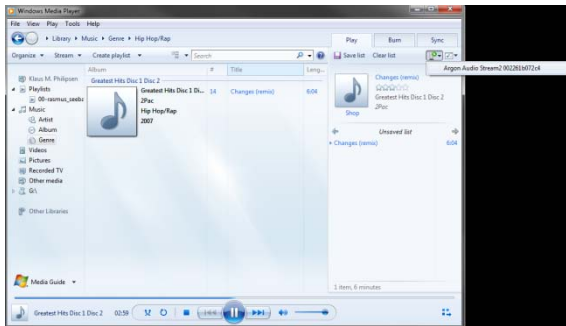
Before you can use the “Play To” feature you need the set-up Stream1 for Windows 7 streaming media.

## Use “Play To” in Windows Media Player

Windows Media Player makes it easy to manage your media, find items that you want to play, and open Play To. To select items that you want to play, follow these steps:

1. Click the **Start** button, click **All Programs**, and then click **Windows Media Player**.  
If the Player is currently open and you’re in Now Playing mode, click the **Switch to Library** button in the upper-right corner of the Player.
2. If the list pane is closed or if the **Burn** or **Sync** tabs are exposed, click the **Play** tab.
3. Find the items that you want to play in the Player Library, and then drag those items from the details pane into the list pane.
4. Click the **Play to** button at the top of the list pane, click the device on your network that will receive the media.

- In the **Play To** dialog box, use the playback controls to play, pause, or stop the media stream, and to change to the next or previous item in the list.



## Use “Play To” elsewhere in Windows 7

Outside of Windows Media Player, you can stream media to Stream1 with “Play To” by right-clicking music files. To select music files and stream them to Stream1, follow these steps:

1. Click the files you want to stream to Stream1.
2. Right-click the selected files, point to “Play to”, and then click the device on the network that will receive the media.
3. In the Play To dialog box, use the playback controls to play, pause, or stop the media stream, and to change to the next or previous item in the list.



## 7. UNDOK Wireless Device Remote Control

The UNDOK Argon Audio Wireless Device Remote Control is an application for IOS and Android devices that allows users to control Argon radios from these devices. Using the Wireless Device Remote Control application, you can navigate between the radio's music modes and browse and play content remotely.

The UNDOK Wireless Device Remote Control works on all iPhones, iPod touch and iPad devices running iOS 3.1.3 or later as well as Android devices running 2.2 or later. It is compatible with the IR2.2 software running on the Argons's Venice 6.2 module and all Venice 6.5 modules Wireless Device Remote Control is not compatible with iNet1.

*Note: For brevity, "Phone" is used to mean iPhone, iPod touch, iPad and Android" in this chapter.*

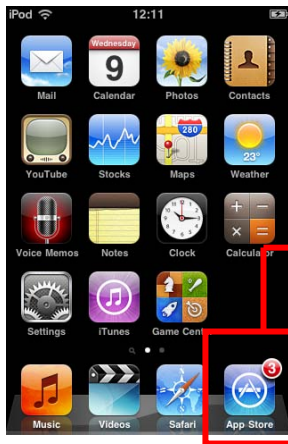
UNDOK quick guide kan hentes her <http://www.argonaudio.com/undok-guide/>



## Obtaining and installing the UNDOK Wireless Device Remote Control application

To install the UNDOK Wireless Device Remote Control application on the Phone:

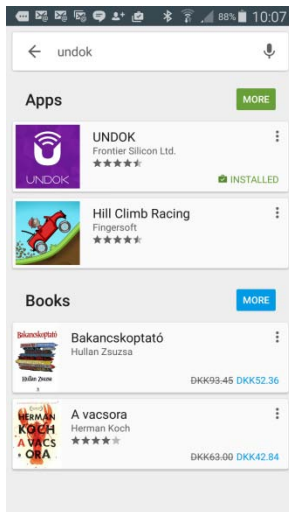
1. In the Phone's main menu, open the App Store/Play store by clicking the App Store icon:



App Store icon

2. In the App/Play Store, search for **UNDOK**
3. Select **UNDOK – wireless device remote control.**

:

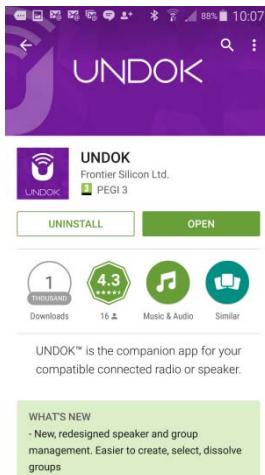


4. Tap the entry **UNDOK – Wireless Device Remote Control**.

The application details screen opens

5. Tap **Install**.

The UNDOK Wireless Device Remote Control application is downloaded and installed onto your Phone.



## 8. Troubleshooting

Problem	Cause	Solutions
Cannot connect to network	Network down	Check that network is working between a computer and the router
	Router restricts access to listed MAC addresses	Obtain the Stream1 MAC address from <b>Menu &gt; System settings &gt; Network &gt; View settings</b> and add to router list.
		<i>Note: Stream1 has separate MAC addresses for wired and wireless networks; only the current network adaptor method address is displayed, but the other address can be obtained by changing the first pair of digits between '00' (wireless) and '02' (wired)</i>
	Insufficient Wi-Fi signal strength	Check distance to router; see if a computer can connect to the network in this location
	Unknown encryption method	Change encryption method on router. Stream1 supports WEP, WPA and WPA2
	Unusual network configuration	Setup network manually through <b>Menu &gt; System settings &gt; Network &gt; Manual settings</b>
	Firewall preventing access	Check the following ports are open on the router: UDP and TCP ports 80 and 123;
DNS port 53.		
Windows shares: ports 135 – 139 and 445.		
Windows Media Player: varies – non-Microsoft firewalls may require configuration for UPnP.		

Problem	Cause	Solutions
Cannot connect to Internet	Internet connection down	Check that Internet is working for a computer connected to the same network
	Firewall preventing access	Check the following ports are open: UDP and TCP ports 80 and 123;
		DNS port 53. Some Internet radio stations may require additional ports to be opened.
Cannot play particular Internet radio station	Station not broadcasting, overloaded or insufficient bandwidth.	Try other stations; try listening on computer via Internet radio portal website; try later.
	Station broadcasting using unknown codec.	
	Link out of date.	

## Glossary

MSC	(USB) Mass Storage Class (device)
UI	User Interface
UPnP	Universal Plug and Play
USB	Universal Serial Bus
WLAN	Wireless Local Area Network

## Specifications:

Type: Spotify Connect, Internet Radio and UpnP Streaming Media Player  
Inputs: Ethernet/Wi-Fi, 5V DC power via Mini USB  
Output: RCA stereo, Spdif Optical, 3,5mm.  
Main voltage: 220-240V, 50/60Hz  
Output sensitivity: 2000mV (RCA) analogue  
Optical output max.24bit/192Khz  
Separation: >50dB  
D/A conversion: Cirrus Logic CS4344 max. 24bit/192Khz. (notice FLAC support max. 16 bit)

