



02 OWNER'S MANUAL
04 ILLUSTRATIONS
14 SPECIFICATIONS
14 TROUBLESHOOT

Owner's manual

Dear Customer,

Quality has always been our driving force and founding Argon Audio is a natural extension of this philosophy. We have 20 years' experience in creating and specifying high quality products, manufacturing them and selling them on to end users with Value-for-Money as the primary aim. And Argon Audio is a brand fully compliant with these values.

Design, features and quality standards are all specified in Denmark and manufacturing takes place in the Far East, where quality vendors are highly competitive - and as a result supply outstanding Value-for-Money products – to the delight of both ourselves and our customers!

Introduction

Thank you for choosing Argon Audio loudspeakers, we hope they will bring you many years of enjoyment. Please read this manual fully before unpacking and installing the product.

Unpacking

We have during production and packing carefully checked and inspected these loudspeakers.

After unpacking please check for any damage from transport.

We recommend that you keep the original carton box and packing material for any future shipping.

Loudspeaker installation

The speakers are best used with the tweeters approximately at ear level when seated.

Loudspeaker positioning

Variations in placement of your loudspeakers can produce dramatic differences in the way music sounds. No listening room is the same and therefore we encourage you to spend some time experimenting with which placements work best in your listening room. Trust your ears and be willing to experiment freely, you can not ruin anything.

You can start with our basic recommendations.

Please try to ensure that the room's surroundings of each loudspeaker left and right are similar in acoustic character. For example, if one loudspeaker is placed on bare walls while the other is placed close to soft furniture's and curtains, both the overall sound quality and the stereo image are likely to be compromised.

Because bookshelves are usually located close to the wall placement on bookshelves will often provide a richer, more full-bodied sound. In other words; you will get more Bass.

On the other hand, if you place the speakers free-standing You will get less Bass but a clearer sound.

To begin with, the speakers should be positioned between 1.5 m and 3 m apart at two corners of an equilateral triangle, completed by the listening area at the third corner. This is the optimal way of placement.

The Argon Octave 5A is designed to play single-standing, if the room is not too big.

In bigger rooms (+30 sqm) a subwoofer will need to be added in order to get optimal sound.

Running-in period

We recommend a running-in time of your new Argon Octave 5A loudspeakers of approximately 15-20 hours at normal listening level before you decide on the final positioning of the loudspeakers. During the running-in time the drive units will settle in and perform as intended.

Connecting your loudspeakers

We recommend that you read the manual of your other audio products carefully before connecting your loudspeakers. Please switch off all equipment when connecting your loudspeakers.

The speaker binding posts on the terminal accepts wire up to Ø 4mm or cables with banana plugs.

Make sure that positive terminal binding posts on the Passive speaker (marked + and colored red) are connected to the positive output terminal binding posts on the Active speaker and that the negative terminals on the Passive speaker (marked – and colored black) are connected to the negative output terminal on the Active speaker.

Now you can connect the audio source you want. (read more about this on page 4 and forward).

Care and cleaning

We don't recommend use of any solvents or cleaners on Argon Octave 5A cabinets, the cabinet surface usually only requires dusting or cleaning with a damp soft cloth (only use cold clean water).

Avoid touching the drive units, especially the tweeter, as damage may result.

Environmental information

Argon Octave 5A loudspeakers comply with international directives on the Restriction of Hazardous Substances (RoHS) in electrical and electronic equipment and the disposal of Waste.

Electrical and Electronic Equipment (WEEE) - the crossed bin symbol indicates compliance and that the products must be appropriately recycled or processed in accordance with these directives.

Safety instructions

Please store this instruction manual for future reference.

Do not use this product near water or moisture. Clean only with a dry cloth. Unplug this product from the wall outlet before cleaning. Place the unit on a solid surface. Do not block any ventilation openings. Do not put it in a closed bookcase or a cabinet that may keep air from flowing through its ventilation openings. Do not install near any heat sources, such as radiators, heat registers, stoves or other appliances that produce heat. Protect the power cord from being walked on or pinched, particularly at plugs and the point where they exit from the product. Servicing is required when the product has been damaged. Do not attempt to service this product yourself. Opening or removing covers may expose you to dangerous voltages or other hazards. Please contact the manufacturer to be referred to an authorized service center near you. To prevent risk of fire or electric shock, avoid over loading wall outlets, extension cords, or integral convenience receptacles. Do not let objects or liquids enter the product. Use proper power sources. Plug the product into a proper power source, as described in the operating instructions or as marked on the product.

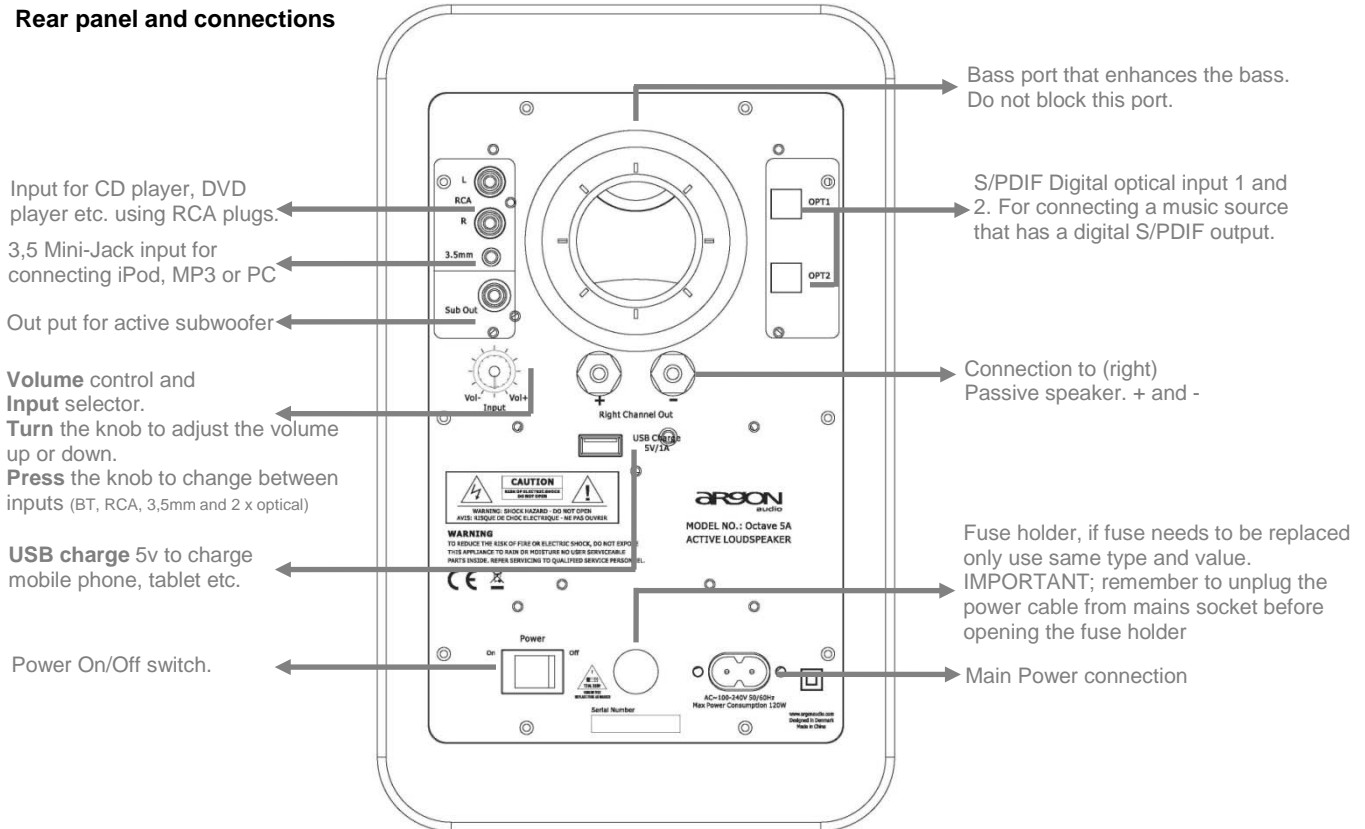
Front panel, input indicators

Power ON LED, and input indicator

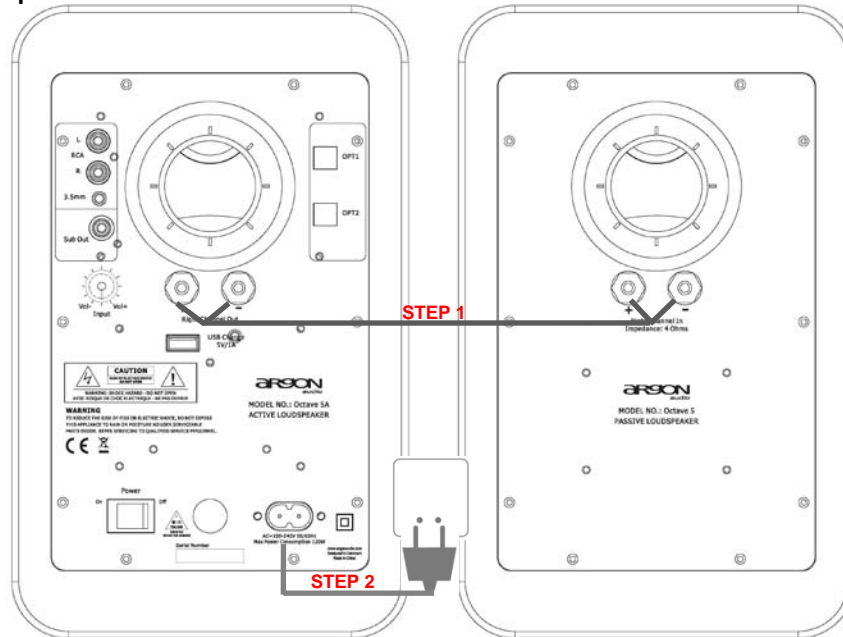
- Lights Yellow when in stand-by
- Lights bright Blue when "ON"
- Lights bright Blue when in RCA, Mini Jack and Optical mode 1 and 2
- Lights bright Blue + flashing light Blue, when ready to connect in Bluetooth mode
- Lights bright Blue + light Blue when connected in Bluetooth mode



Rear panel and connections



Connecting your speakers



STEP 1

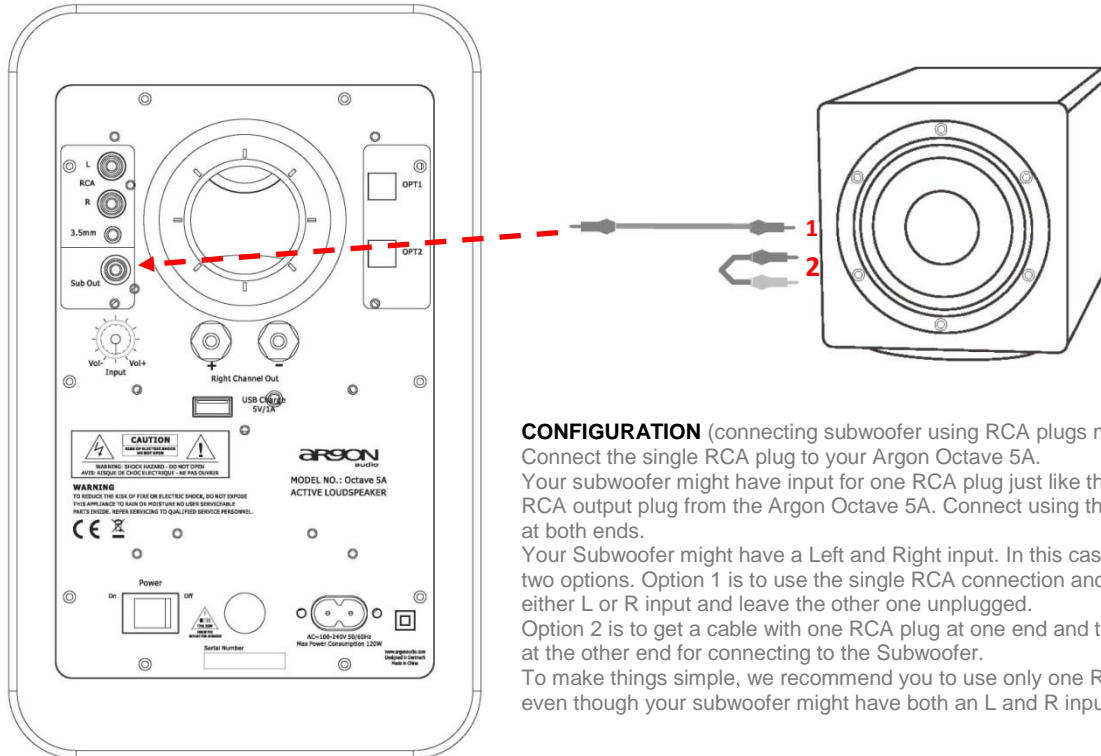
Connect the RED (+) and BLACK (-) terminals from the left speaker to the corresponding terminals on the right speaker using at least decent speaker cable, to enhance sound quality. Insulation on cable must be stripped on all ends.

Note: Because this Argon system is self-powered, do not connect the speaker terminals to the speaker outputs of a stereo receiver.

STEP 2

Connect the power cord into the left speaker and the other end into the wall outlet.

Connect your Argon Octave 5A to a subwoofer



CONFIGURATION (connecting subwoofer using RCA plugs mono or stereo)

Connect the single RCA plug to your Argon Octave 5A.

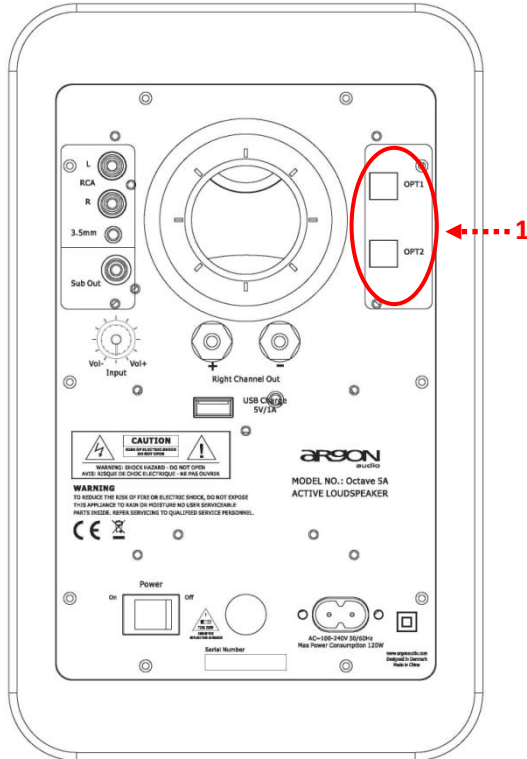
Your subwoofer might have input for one RCA plug just like there is only one RCA output plug from the Argon Octave 5A. Connect using this single RCA plug at both ends.

Your Subwoofer might have a Left and Right input. In this case you can choose two options. Option 1 is to use the single RCA connection and you can choose either L or R input and leave the other one unplugged.

Option 2 is to get a cable with one RCA plug at one end and two RCA (L and R) at the other end for connecting to the Subwoofer.

To make things simple, we recommend you to use only one RCA at both ends, even though your subwoofer might have both an L and R input.

Use of digital audio connection (S/PDIF optical)



Optical inputs

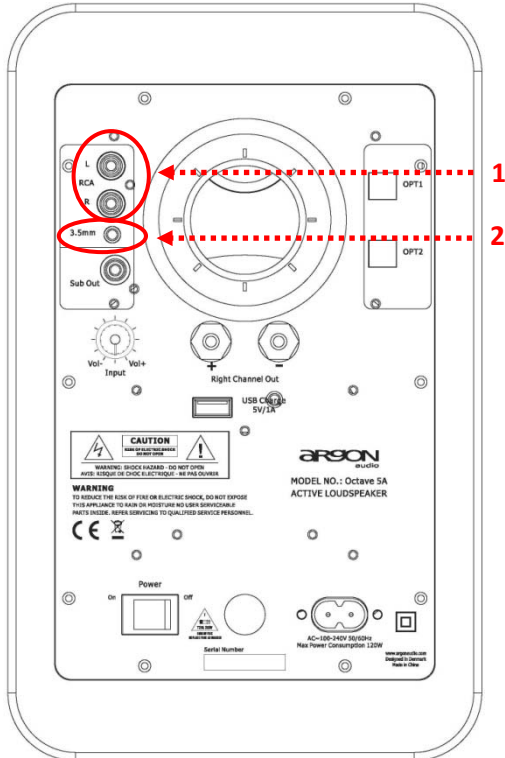
Your Argon Octave 5A is equipped with two optical digital inputs (shown marked no.1 on the drawing)
An optical Digital input means that you can connect a sound source that has a optical digital output.

Conversion of the signal from digital to analogue would normally happen in the sound source, but when connecting your device via optical digital input, the D/A conversion will happen in the Argon Octave 5A. This gives the shortest path of the analogue signal which is the optimal aim for best sound quality.

Octave 5A has a high quality build in D/A converter that ensures you optimal sound quality with optical digital input audio. Using optical inputs ensures you that the D/A conversion happen in the speaker and not in the playback device.

Nice to know about TV audio signal and optical inputs.
The optical input on Octave 5A is a fixed audio input where the volume from a TV has to be adjusted on the Argon Octave 5A speaker.

Use of analogue audio connection



What not to do when connecting a Source input to your Argon Octave 5A

Do not use a combined RCA and Mini-Jack (3,5mm) cable! Often you will see a cable that has mini-jack at one end and two RCA plugs at the other end. The cable will work but the input sensitivity of mini-jack and RCA are quite different. This will result in the Argon Octave 5A playing too low volume. Use only cables with identical plug types at both ends.

Analogue audio connections

Your Argon Octave 5A is equipped with 2 different analogue audio input types. In this section we will explain you how and when to use the different inputs. The 2 different connection types are show on the drawing as no. 1-2
Connections explained

- *1 is standard left/right RCA to use typically with a DVD player, CD player or normal Hi-Fi audio source component
- *2 is mini-jack 3,5mm stereo input. Typically for use with connecting a iPod, Mp3 Player, PC or TV

Note that most new TV remotes can control the Argon Octave 5A active speaker volume if connected to variable TV audio out.

Use of Bluetooth audio connection

Pairing and connecting Bluetooth

- Turn on the Argon Octave 5A
- A Blue light will show in the front display-eye
- Activate Bluetooth on your mobile/tablet/pc etc
- Activate “make device discoverable” on your mobile/tablet/pc etc
- Make your mobile/tablet/pc etc search for Bluetooth devices
- “Argon Octave 5A” will show up in the display as “found”
- Tap on the “Argon Octave 5A” text on the mobile/tablet/pc etc to pair
- When paired tap again on the “Argon Audio Octave 5A” text to Connect
- Your mobile/tablet/pc etc will now show “Argon Audio Octave 5A” connected to media playback
- Start playback on the mobile/tablet/pc etc
- Again, press on the volume knob on the back of Argon Octave 5A until the display-eye show a bright Blue light + a light Blue light, and play back will start.

A few things to be aware about

- If/when both the bright Blue light and the light Blue light in the display-eye light up steadily, it means that a Bluetooth device is already connected.
- Before search, pair and connecting a new device, disconnect any other already connected devices. Disconnect it on your mobile/tablet/pc etc, and the

light Blue light in the display-eye on Argon Octave 5A will start will start blinking.

- When the light Blue indicator in the display-eye is blinking the speaker is ready to search, pair and connect.

Connecting a PC/Laptop to Octave 5A via Bluetooth

If you connect your Argon Octave 5A to PC/Laptop there might be a few things you need to be aware about, all depending on what operating system you have on your PC/Laptop

After having connected (following the connection process already described), you might need to activate the Argon Octave 5A as default playback device on your PC/Laptop. You do this by:

- Opening the “Sound” settings menu from either “Control panel” or from the desk top taskbar in Windows (clicking the symbol indicating a speaker).
- In the window that pop-up chose “playback” tab.
- If Argon Octave 5A is already connected, two or more playback devices will be shown. Argon Octave 5A will be named as “Bluetooth hands free audio”.
- Click on the device indicator and choose “set as default”, and you are ready to go.

Notice; if you have connected Argon Octave 5A via Bluetooth to a Windows based PC/Laptop.

Argon Octave 5A will automatically connect to your PC/Laptop when it's turned on. To avoid this you need to disconnect Argon Octave 5A in the PC/Lap top Bluetooth settings.

Using Bluetooth Indicators and functionality

Play back

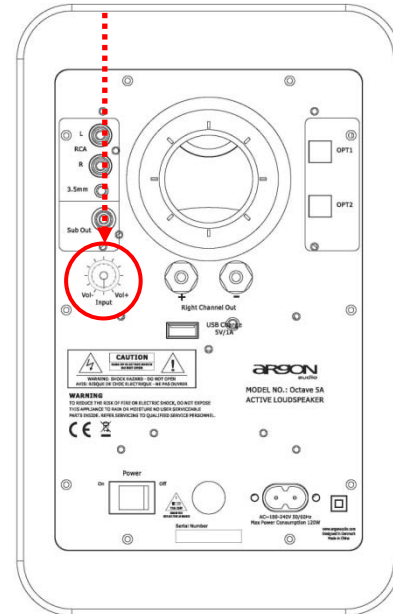
- Any music player app can be used for play back. However there are a lot of music player app's out there and some are not really and some are beta apps. These can have issues when used with Bluetooth. So we recommend to use music player apps that come preinstalled with your mobile/tablet/pc etc
- It is recommended that you set the volume level on Argon Octave 5A at a rather high level and use your mobile/tablet/pc etc to adjust the play back volume.

Operating Argon Octave 5A

Volume control/input selector

NOTICE this knob/button has THREE FUNCTIONS:

- 1) Controlling volume by **turning**
- 2) Changing input, by **pressing**
- 3) Turn off/on, by **pressing/holding** 3 sec.



Controlling the volume

The main volume on Argon Octave 5A is adjusted on the back side as indicated on above drawing (page 11).

It is recommended that you set the volume level on Argon Octave 5A at a rather high level and use your mobile/tablet/pc etc app to adjust the play back volume.

Regarding TV sound, most TV remotes can control the Argon Octave 5A active speaker volume if connected to variable TV audio out and to mini jack input on Argon Octave 5A.

If you connect your TV to Argon Octave 5A via an optical out/input you should be aware that the signal is fixed. This means that the volume has to be controlled on the Argon Octave 5A and not on the TV remote.

Unless you have a settop box, smart TV box or similar connected to your TV, then you can adjust the TV sound volume on the remote control from your settop box, smart TV box directly.

Input selection

Argon Octave 5A has 5 different inputs: Bluetooth, RCA, Mini Jack 3,5 mm, Optical1 and Optical2

Inputs are chosen by pressing the volume knob as indicated on above drawing (page 11)

The input cycle is like this:

1. Bluetooth
2. RCA
3. Mini Jack 3,5 mm,
4. Optical1
5. Optical2.

Each time the knob is pressed it will change to the next input.

When one cycle is ended the cycle will start again.

When the knob is pressed the bright Blue display-eye will give a quick blink. When connected to Bluetooth input, the display-eye will show both a bright Blue and a light Blue light.

Argon Octave 5A will always start up on the last used play back source unless it's not connected or turned on anymore.

Manually turn Argon Octave 5A ON or OFF

Press and hold the volume/input knob for 3 sec and it will either turn On or Off.

Special feature

Power On and Off modes

Argon Octave 4A has both "Auto Power Up" (**APU**) and "Auto Power Off" (**APO**)

"Auto Power Off" (**APU**)

Argon Octave 4A will automatically turn **OFF** if there is no sound signal (from current played input) for 15 minutes.

"Auto Power Up" (**APU**)

Argon Octave 4A will automatically turn **ON** when a sound signal, from any input, is detected.

Notice: Out-of-the-Box, Argon Octave 4A comes with APU in Off mode (No APU).

For “Auto Power Up” (**APU**) there are 3 different settings you can choose from:

No APU

- means you need to turn Argon Octave 4A On manually (see above)

APU1 – scanning all inputs

- Argon Octave 4A will make a cycling process and scan all five inputs for signal. The process takes about 3 seconds for each cycle
- While searching for an active input the Blue light will flash in the display-eye.
- When a signal is found, Argon Octave 4A will automatically turn On and select the source. If you have several sources connected to the Argon Octave 4A it's recommended to use this setting.

APU2 – detect only last selected source

- Which also means that only the last played input source can turn on the Argon Octave 4A. If you have only one input connected its recommended to use this setting.

Setting/changing the APU mode

Setting - No APU

- Unplug the AC power cable from the back side of Argon Octave 4A, and wait for 10 seconds to proceed to the next step. (to discharge completed)
- Press and hold the volume/input knob while you insert the AC power cable again.

- When the display-eye on the front start to flash yellow, release the knob.
- Wait until the display-eye stop flashing, APU is now set to have **no** APU and Argon Octave 4A will go into standby

Setting - APU1

- Unplug the AC power cable from the back side of Argon Octave 4A, and wait for 10 seconds to proceed to the next step.
- Press and hold the volume/input knob while you insert the AC power cable again.
- When the display-eye on the front start to flash yellow, release the knob.
- Press and release the knob again **ONCE** while the yellow light is still flashing (press within five seconds)
- Wait until the display-eye stop flashing, APU is now set to cycling process and Argon Octave 4A will go into standby

Setting – APU2

- Unplug the AC power cable from the back side of Argon Octave 4A, and wait for 10 seconds to proceed to the next step.
- Press and hold the volume/input knob while you insert the AC power cable again.

- When the display-eye on the front start to flash yellow, release the knob.
- Press and release the knob again **TWICE** while the yellow light is still flashing (press within five seconds)
- Wait until the display-eye stop flashing, APU is now set to APU on last selected source and Argon Octave 4A will go into standby

Specifications Argon Octave 5A

Tweeters: 1 inch Silk Dome with Neo magnet and Aluminum heat sink

Woofers: 5,25 inch Kevlar cone with antimagnetic shield

Nominal Impedance: 4 Ohm

Sensitivity: 2V (/1W/1m) 88 dB

Amplifier Type: Class D

Power Output: 55 Watts RMS per channel

Input Sensitivity: 550 mV

Total Harmonic Distortion: < 0.3%

Crossover System: 2-way

Crossover Frequency: 2,5 kHz

Frequency Response: 50 Hz - 20 kHz

Bluetooth: 4.0 (Supports aptX CODEC)

Outputs: 1 x Subwoofer

USB Charge Port 5 V 1A

Speaker Terminals: Left and Right Binding Posts

Input Voltage / Frequency: AC 100V-240V 50/60 Hz

Standby Power Consumption: < 0.5 W

Power Management (Auto Stand-by)

According to the EC regulations implemented January 1st. 2013 Argon Audio Octave 5A will automatically go into auto standby if they are without a music signal for 15 minutes. This rule is applied by the EC in order to save power consumption.

Basic Troubleshooting

If the LED does not light up, check...

that the AC power cord is firmly plugged into the rear panel and wall outlet.

to make sure the speaker rear panel power switch is ON.

that the speaker is getting power from the wall outlet.

that the rear panel match to the operating voltage.

the fuse in the AC IN on the rear panel. If the fuse needs to be replaced it is extremely important to replace only with same fuse type and value.

If no sound output, check...

that the speaker is turned on (blue LED illuminated)

to make sure the right speaker is connected correctly to the left.

that the volume on the speaker back panel is not all the way down.

the volume level on the iPod or other audio source it not at 0 level..

that there is music playing on your iPod or other audio source player.

If bass output is low, check...

speaker wire polarity (verify that wires are going to same terminals on both speakers)

that the speaker placement is not too close to a wall or other obstruction.

that the bass ports on the rear panels are not blocked by a rodent or jelly sandwich.

If no output from right speaker, check...

that the speaker wire is properly connected from the left to right.

Check by removing the speaker wire from both terminals on each speaker and reconnecting.