

ARGON

746050A



02 OWNER'S MANUAL

04 ILLUSTRATIONS

10 SPECIFICATIONS

10 TROUBLESHOOT

Owner's manual

Dear Customer,

Quality has always been our driving force and founding Argon Audio is a natural extension of this philosophy. We have 20 years' experience in creating and specifying high quality products, manufacturing them and selling them on to end users with Value-for-Money as the primary aim. And Argon Audio is a brand fully compliant with these values.

Design, features and quality standards are all specified in Denmark and manufacturing takes place in the Far East, where quality vendors are highly competitive - and as a result supply outstanding Value-for-Money products – to the delight of both ourselves and our customers!

Introduction

Thank you for choosing Argon Audio loudspeakers, we hope they will bring you many years of enjoyment. Please read this manual fully before unpacking and installing the product. This manual covers both Argon 7450A and 7460A models

Unpacking

We have during production and packing carefully checked and inspected these loudspeakers.

After unpacking please check for any damage from transport.

We recommend that you keep the original carton box and packing material for any future shipping.

Loudspeaker installation

The speakers are best used with the tweeters approximately at ear level when seated.

Loudspeaker positioning

Variations in placement of your loudspeakers can produce dramatic differences in the way music sounds. No listening room is the same and therefore we encourage you to spend some time experimenting with which placements work best in your listening room. Trust your ears and be willing to experiment freely, you can not ruin anything.

You can start with our basic recommendations.

Please try to ensure that the room's surroundings of each loudspeaker left and right are similar in acoustic character. For example, if one loudspeaker is placed on bare walls while the other is placed close to soft furniture's and curtains, both the overall sound quality and the stereo image are likely to be compromised.

Because bookshelves are usually located close to the wall placement on bookshelves will often provide a richer, more full-bodied sound. In other words; you will get more Bass. On the other hand, if you place the speakers free-standing You will get less Bass but a clearer sound.

To begin with, the speakers should be positioned between 1.5 m and 3 m apart at two corners of an equilateral triangle, completed by the listening area at the third corner. This is the optimal way of placement.

The Argon 7460A/7450A is designed to play single-standing, if the room is not too big.

In bigger rooms (+30 sqm) a subwoofer will need to be added in order to get optimal sound.

Running-in period

We recommend a running-in time of your new Argon 7460A/7450A loudspeakers of approximately 15-20 hours at normal listening level before you decide on the final positioning of the loudspeakers. During the running-in time the drive units will settle in and perform as intended.

Connecting your loudspeakers

We recommend that you read the manual of your other audio products carefully before connecting your loudspeakers. Please switch off all equipment when connecting your loudspeakers.

The speaker binding posts on the terminal accepts wire up to Ø 4mm or cables with banana plugs.

Make sure that positive terminal binding posts on the Passive speaker (marked + and colored red) are connected to the positive output terminal binding posts on the Active speaker and that the negative terminals on the Passive speaker (marked – and colored black) are connected to the negative output terminal on the Active speaker.

Now you can connect the audio source you want. (read more about this on page 4 and forward).

Care and cleaning

We don't recommend use of any solvents or cleaners on Argon 7460A/7450A cabinets, the cabinet surface usually only requires dusting or cleaning with a damp soft cloth (only use cold clean water).

Avoid touching the drive units, especially the tweeter, as damage may result.

Environmental information

Argon 7460A/7450A loudspeakers comply with international directives on the Restriction of Hazardous Substances (RoHS) in electrical and electronic equipment and the disposal of Waste.

Electrical and Electronic Equipment (WEEE) - the crossed bin symbol indicates compliance and that the products must be appropriately recycled or processed in accordance with these directives.

Safety instructions

Please store this instruction manual for future reference.
Do not use this product near water or moisture. Clean only with a dry cloth. Unplug this product from the wall outlet before cleaning. Place the unit on a solid surface. Do not block any ventilation openings. Do not put it in a closed bookcase or a cabinet that may keep air from flowing through its ventilation openings. Do not install near any heat sources, such as radiators, heat registers, stoves or other appliances that produce heat. Protect the power cord from being walked on or pinched, particularly at plugs and the point where they exit from the product. Servicing is required when the product has been damaged. Do not attempt to service this product yourself. Opening or removing covers may expose you to dangerous voltages or other hazards. Please contact the manufacturer to be referred to an authorized service center near you. To prevent risk of fire or electric shock, avoid over loading wall outlets, extension cords, or integral convenience receptacles. Do not let objects or liquids enter the product. Use proper power sources. Plug the product into a proper power source, as described in the operating instructions or as marked on the product.

ARGON

746050A

Front panel

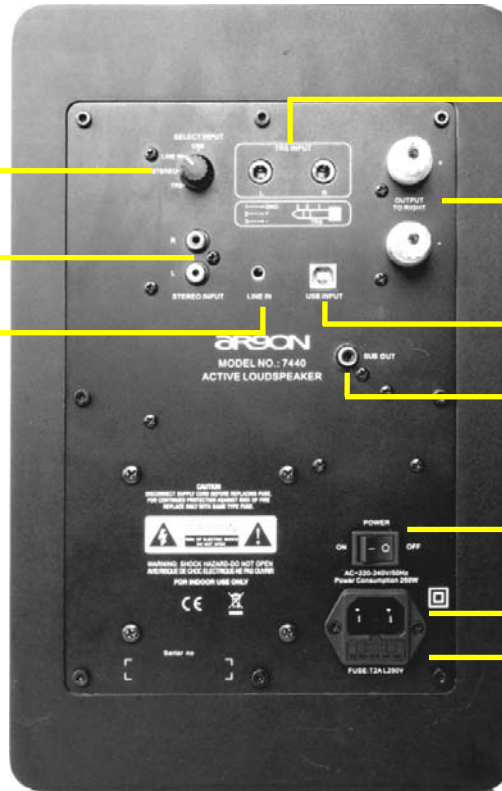


Rear panel and connections

Input selector.
Corresponds the connections
on the back panel

Input for CD player, DVD
player etc. using RCA plugs

3,5 Mini-Jack input for
connecting iPod, MP3 or PC



TRS phone jack balanced input.
For easy professional audio use

Connection to (right)
Passive speaker

USB audio input from any
digital USB source (like a PC)
USB plug type B

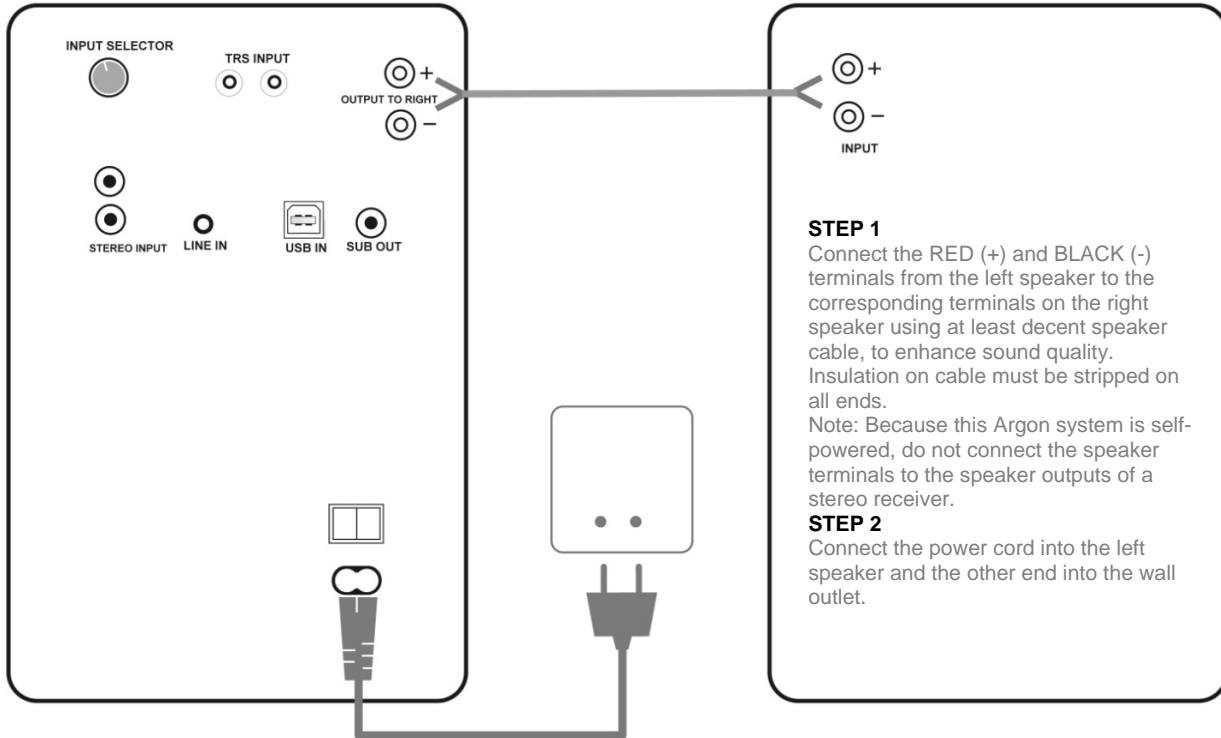
Out put for active subwoofer

Power On/Off switch

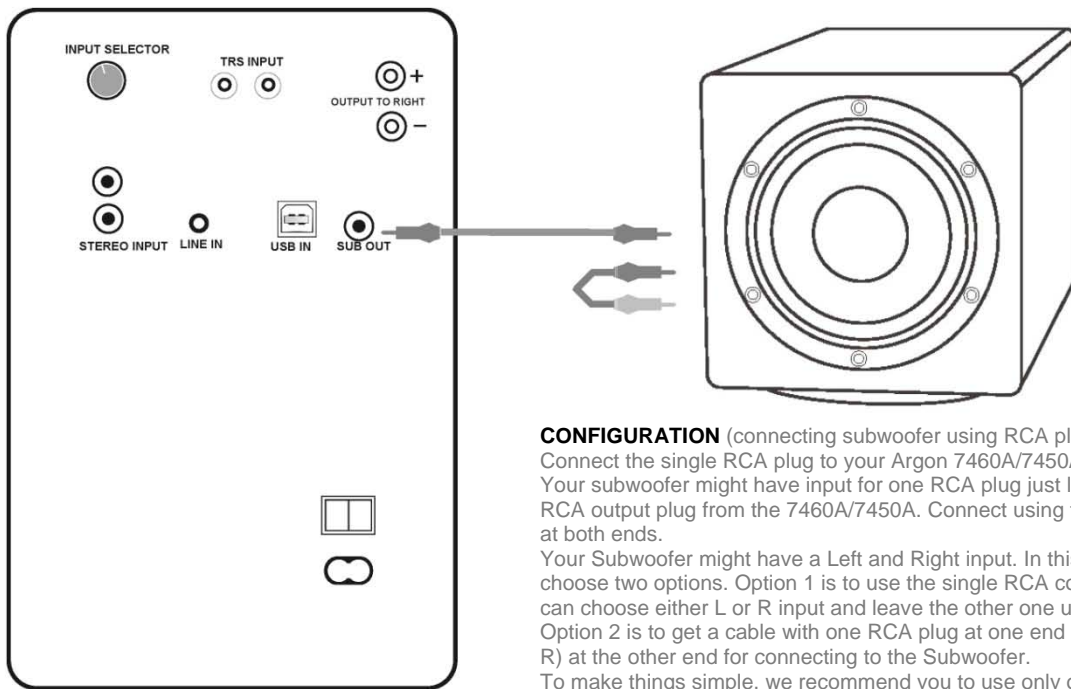
Main Power connection

Fuse holder, if fuse needs to be
replaced only use same type and
value. IMPORTANT; remember
to unplug the power cable from
mains socket before opening
the fuse holder

Connecting Your speakers



Connect your Argon 7460A/7450A to a subwoofer



CONFIGURATION (connecting subwoofer using RCA plugs mono or stereo)

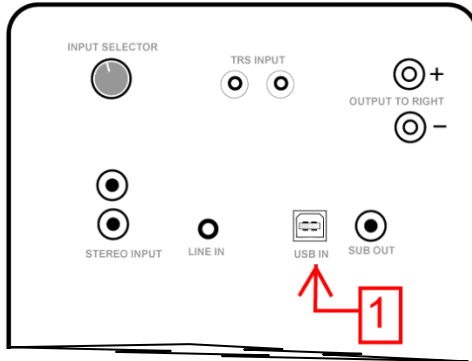
Connect the single RCA plug to your Argon 7460A/7450A. Your subwoofer might have input for one RCA plug just like there is only one RCA output plug from the 7460A/7450A. Connect using this single RCA plug at both ends.

Your Subwoofer might have a Left and Right input. In this case you can choose two options. Option 1 is to use the single RCA connection and you can choose either L or R input and leave the other one unplugged. Option 2 is to get a cable with one RCA plug at one end and two RCA (L and R) at the other end for connecting to the Subwoofer.

To make things simple, we recommend you to use only one RCA at both ends, even though your subwoofer might have both an L and R input.

Use of digital audio connection (USB Audio)

7460A/7450A back panel cut out



USB AUDIO

Your Argon 7460A/7450A is equipped with a USB Audio Digital input (shown marked no.1 on the above drawing). A USB Audio Digital input means that you can connect a PC and directly play digital audio content from the PC. Conversion of the signal from digital to analogue would normally happen in the PC, but often the D/A conversion

quality in PC's are of poor standard. 7460A/7450A has a high quality build in D/A converter that ensures you optimal sound quality when using USB digital audio. Using USB Audio ensures you that the D/A conversion happen in the speaker and not in the PC.

What can you connect to USB AUDIO input?

USB digital audio input is shown marked no.1 on the drawing.

Your Argon 7460A/7450A is using a USB type B plug (similar to what many Printers use)

USB AUDIO is primarily intended for playback from a PC.

All PC's have USB AUDIO out.

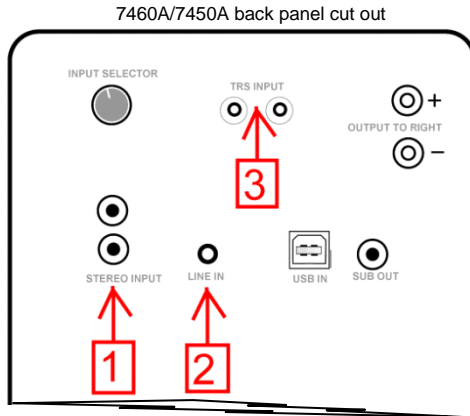
Connection will in most cases be a standard flat USB plug in the PC end and a USB type B plug for the 7460A/7450A

Other audio source products might also have USB AUDIO out. Refer to your audio source manual about this issue.

Notice that Apple iPod, iPhones etc, are not supported for USB AUDIO on 7460A/7450A

If you want to know more about USB and USB AUDIO you can check <http://en.wikipedia.org/wiki/USB>

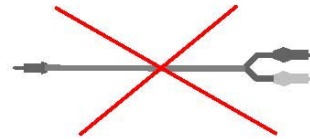
Use of analogue audio connection



Analogue audio connections

Your Argon 7460A/7450A is equipped with 3 different analogue audio input types. In this section we will explain you how and when to use the different inputs. The 3 different connection types are show on the above drawing as no. 1-3

Note that most new TV remotes can control the Argon 7460A/7450A active speaker volume if connected to variable TV audio out.



What not to do when connecting a Source input to your Argon 7460A/7450A

Do not use a combined RCA and Mini-Jack (3,5mm) cable! Often you will see a cable that has mini-jack at one end and two RCA plugs at the other end. The cable will work but the input sensitivity of mini-jack and RCA are quite different. This will result in the Argon 7460A/7450A playing too low volume. Use only cables with identical plug types at both ends.

Connections explained

*1 is standard left/right RCA to use typically with a DVD player, CD player or normal Hi-Fi audio source component

*2 is mini-jack 3,5mm stereo input. Typically for use with connecting a iPod, Mp3 Player, PC or TV

*3 is a not so used standard called 1/4" TRS. It's usage is primarily for Professional Audio use as its makes it easy and safe to plug and unplug the connectors often.

And, once again remember to use analogue audio connect cables with same type plugs at both ends ©

Specifications:

General 7460A/7450A

Type: 2Way Loader Speaker, 2 Drivers, reflex type cabinet
Inputs: Digital USB3.0 audio, 1xmini-jack 3,5 mm stereo, L/R
RCA stereo input, L/R ¼"TRS phone plug
Output: SUB-OUT Sub output level 1.0V
Main voltage: 220-240V, 50/60Hz
Amplifier type: Dual Class AB
Distortion: @4ohm/1-50W <0.05%
Input sensitivity: 1000mV (RCA) 500mV (3.5mm mini-jack),
1000mV TRS

Specific 7460A

Tweeter: 1" Horn loaded design
Woofer: 6" High Power Kevlar Woofer Speaker
Frequency Response: (-3db): 25Hz-20KHz
Output Power: 2X65W (RMS 20-20.000 4ohm) 2X90W 1khz
Weight: 16kg

Specific 7450A

Tweeter: 1" Horn loaded design
Woofer: 5" High Power Kevlar Woofer Speaker
Frequency Response: (-3db): 30Hz-20KHz
Output Power: 2X50W (RMS 20-20.000 4ohm) 2X75W 1khz
Weight: 12kg

Basic Troubleshooting

If the LED does not light up, check...

that the AC power cord is firmly plugged into the rear panel and wall outlet.

to make sure the speaker rear panel power switch is ON.

that the speaker is getting power from the wall outlet.

that the rear panel voltage selector is matched to the operating voltage.

the fuse in the AC IN on the rear panel. If the fuse needs to be replaced it is extremely important to replace only with same fuse type and value.

If no sound output, check...

that the speaker is turned on (blue LED illuminated)

to make sure the right speaker is connected correctly to the left.

that the volume on the speaker back panel is not all the way down.

the volume level on the iPod or other audio source.

If bass output is low, check...

speaker wire polarity (verify that wires are going to same terminals on both speakers)

that the speaker placement is not too close to a wall or other obstruction.

that the bass ports on the rear panels are not blocked by a rodent or jelly sandwich.

If no output from right speaker, check...

that the speaker wire is properly connected from the left to right.

Check by removing the speaker wire from both terminals on each speaker and reconnecting.